

# 高品質自動化塗裝科技

## High Technology Coating System

自動化塗裝系統

粉體、液體噴房

粉體、液體噴槍系統

空汙防治設備

環保、節能、水性/溶劑專用噴房

自動化塗膠系統

塗料輸送泵浦

吊具清潔機

Automation system

Powder and liquid booth

Powder and liquid coating application

Technologies for air cleaning systems

New paint separation system

Adhesive and gluing system

Air powered pumping system

Jig paint stripper



## 春泰公司概要 company profile

公司名稱:春泰機械工程有限公司

Company name: Fuspec Taiwan Pty.,

設立:1973年

Established: 1973

資本金:US\$ 700,000

Capital: US\$ 700,000

代表者:劉秀枝

President: LIU Hsiu Chih

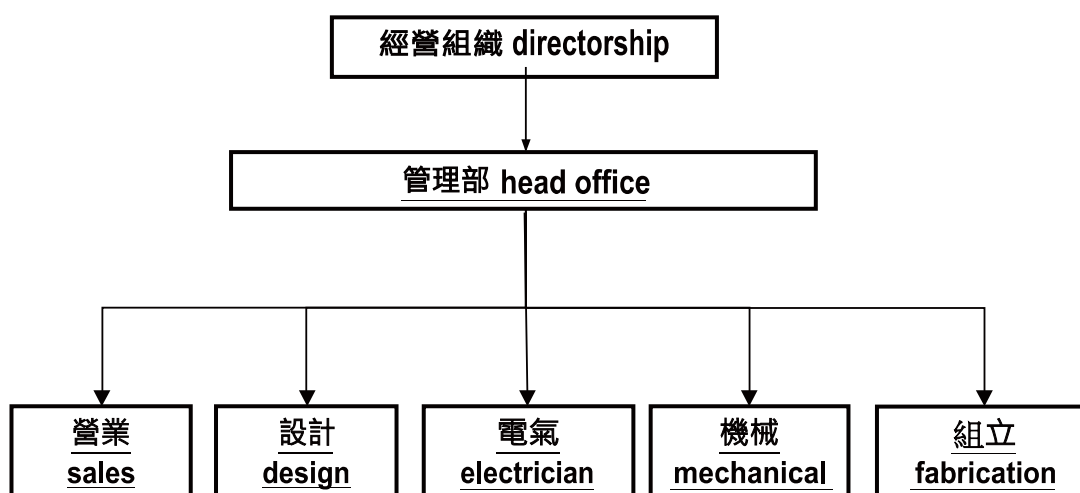
取引銀行:玉山銀行

Banking: E. Sun Bank

證照:工廠登記證,天車,高空作業車,堆高機,  
安全衛生,原廠總代理證書

Certificate: Factory registration,  
Crane self propelled lift vehicle, Forklift,  
Industrial safety qualification,  
Partner certificates

## 台灣春泰機械工程有限公司組織圖 organization



## 春泰公司實景 factory view



會議室 Meeting room



辦公室 Office



實驗室 Laboratory



工廠 Factory

## 粉體塗裝

1. 粉體噴房 E-line 系列, Powder coating booth
2. 粉體噴房 ICF 系列, Powder coating booth
3. 粉體噴房 C-line 系列, Powder coating booth
4. 3D自動工件判別 Industrial solution : DYNAMIC 3D COATING
5. 粉體噴房 S-Line系列, Powder coating booth
6. 粉體自動噴槍系統 PEA 系列, Automatic guns
7. 工業設計部門, Engineered system
8. 自動噴塗機, Motion technology
9. 粉體塗裝供粉中心, Powder center
10. 粉體手動噴槍系統, 振動/粉桶台車式, Manual System Sprint
11. ID手動粉體噴房, Manual spray booth

## 液體塗裝

12. 旋杯式靜電自動化噴塗系統, TOPFINISH RobotBell
13. 兩液型自動化噴塗系統, Electronic mixing unit for 2K/3K
14. 水性靜電自動化噴塗系統, Electrostatic application of waterborne paint
15. 溶劑型/水性靜電自動化噴塗系統, Electrostatic application - automatic
16. 溶劑型/水性靜電手動噴塗系統, Electrostatic application - manual
17. 靜電自動化噴塗系統旋杯, Bell electrostatic automizer
18. 靜電自動化噴塗系統旋杯, Disk electrostatic automizer

## 塗裝機器人、塗料供應、泵浦、工程設計、規劃

19. 粉, 液體塗裝用機器人, ABB robot
20. PCS塗料供應循環泵浦系列, 工程設計, 規劃, Paint circulating system
21. 高黏度塗膠機, 泵浦系列, 工程設計, 規劃, Sealing equipment
22. 塗料輸送泵浦, 泵浦系列, 工程設計, 規劃, High viscosity material transfer
23. 高/中/低壓氣動泵浦, Air operated pumps
24. 塗料供應, 水性/溶劑型塗裝, Pulse-free double-diaphragm pump
25. 流量檢知, 齒輪泵浦, 換色閥組, Flow meter, Gear pump, Dosing technology
26. 靜電高壓測試計, 塗料導電測試計, 黏度計, HV tester, Resistance meter
27. 無氣式噴塗系列, Airless
28. 汽車工業塗膠工程設計, Automatic sealing system
29. POMA 汽車工業一級配套廠專用自動噴塗, Automobile, Tier one

## 噴房

30. 液體噴房, 手動/自動噴塗, Spray booth
31. 自動化噴塗系統, 噴槍清洗, 溶劑回收設備, Robotic paint gun cleaning
32. 環保, 節能, 水性/溶劑型, 塗裝專用噴房, New paint separatin system

## VOC防治設備

33. VOC防治設備, 沸石轉輪, RTO蓄熱式脫臭爐, 濃縮式排ガス處理裝置, 蓄熱式排ガス處理裝置
34. VOC防治設備, 吸附式活性炭塔, Charcoal filter absorber

## 輸送機 conveyor

35. 積放鏈式, 輸送機, 天車系統, Power & free twin rail conveyor

## 膜厚度測裝置, 非接觸式

36. 即時線上同步膜厚度測裝置, 非接觸式, CoatMaster, Coating thickness

## 塗裝消防系統

37. 專業粉體塗裝消防系統 + 自動接地檢測設備, Fire fighting - powder
38. 專業液體塗裝消防系統 + 自動接地檢測設備, Fire fighting - wet

## 吊具清潔設備

39. 吊具, 工件剝漆設備, Jig stripper



## 1. 粉體噴房 E-Line 系列 Powder coating booth

Perfect combination for best results 完美的組合作為最好的結果

The WAGNER E-Line application solution offers the best quality, with all WAGNER components combined in one economic coating system. 華格納 E-Line 系列應用提供最佳品質，藉由所有華格納設備系統被聯合整合設計經濟型噴塗設備。

**增加回收率與最小壓力損失**  
 高效率靜電附層噴槍和高效率的氣流調節器

**最強的應用設備**  
 有數種的系統品質主要的噴塗系統功能強大的噴塗機 PEACA 精密的控制 顯 EPC52 module 與精密的自動注膠機。

**最好的氣流和最高的傳遞效率**  
 特別 PVC 噴房構造而且用華格納精拍機感風設計將內部的噴塗性能，讓下級引導氣流回收應用於塗。

**合理入門的投資費用**  
 優良的產品價值，製造的 PXE 功能表現。

**減少電力消耗**  
 由於系統氣流改良的二次區吸粉器使用較少的能量消耗。

**EEP - Energy Efficiency Package**  
 我們的 EEP 方案（專利已申請出）提供為最有效的能量消耗的噴塗系統和安裝一流優良的氣流的旋風噴塗器。

- 節省達 40% 能量消費和運輸成本
- 減少粉體塗料黏着在噴風管和風管內壁中，也減少粉體塗料的黏滯再粘。
- 最高的產量穩定性

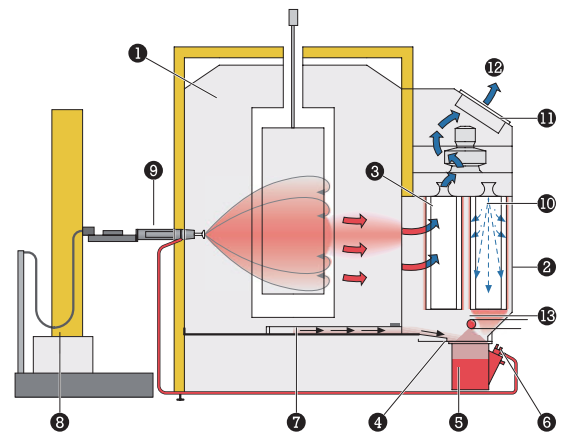
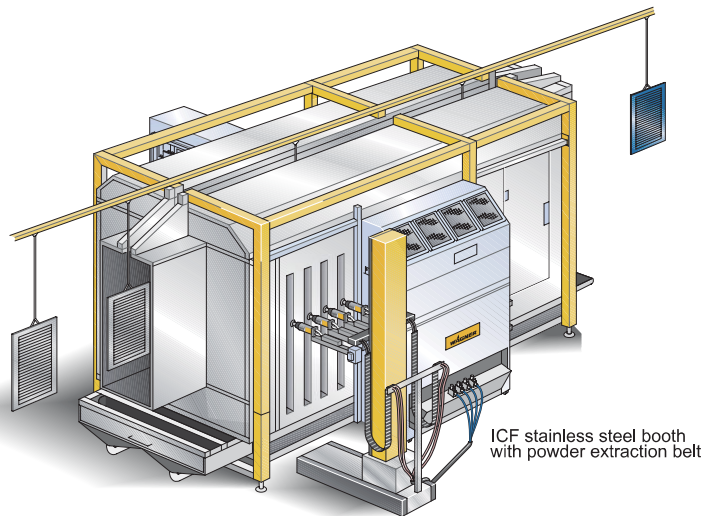
排氣部樣式	舊型式	新方案
	2300 m³/h	380W
	5000 m³/h	275W
		375W

**Simulation of powder flow 粉體塗料量流動模擬**

**Conventional technology 一般常用技術**

**New EEP technology 新 EEP 科技**

## 2. 粉體噴房 ICF 系列 Powder coating booth



1. 粉體塗裝噴房
2. 卡匣式
3. 過濾管
4. 振動篩粉
5. 儲粉桶
6. 塗料泵浦
7. 特殊裝置
8. 自動往覆機
9. 自動噴槍系統
10. 逆洗裝置
11. 最後濾網
12. 室內排氣
13. 特殊裝置



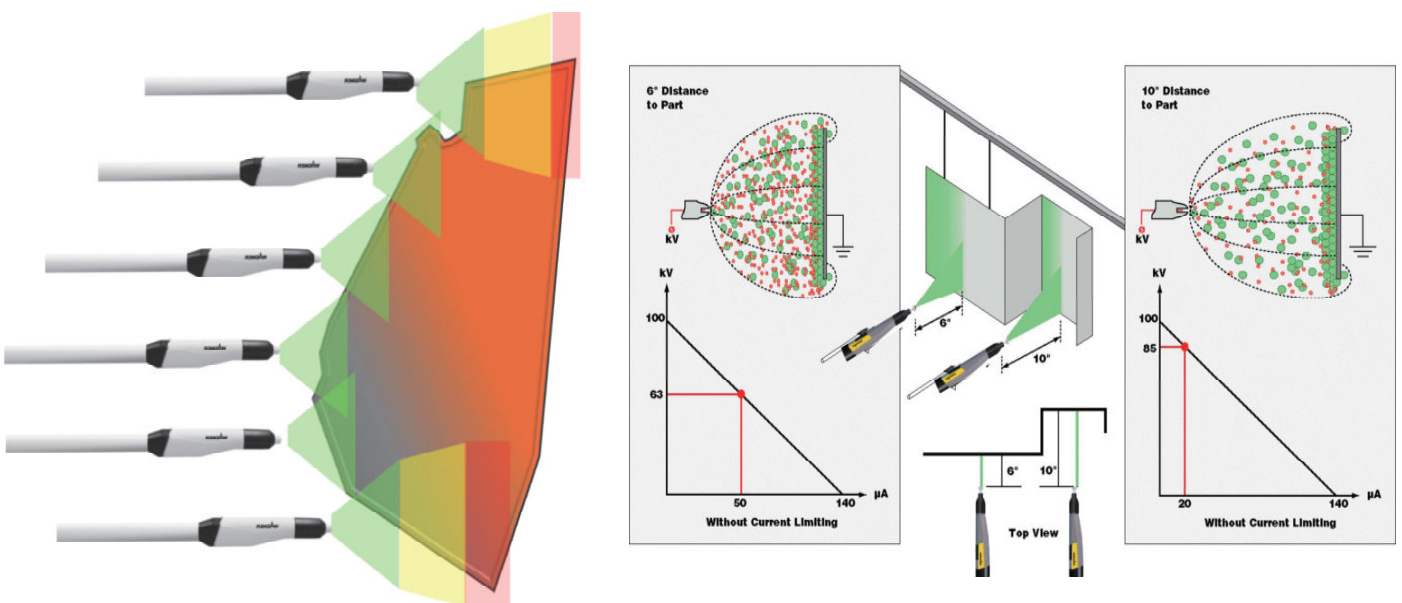
### 3. 粉體噴房 C-Line 系列 powder coating booth

The most flexible powder coating solution for wheels in the world.  
 世界上最靈活的輪圈粉體塗裝解決方案

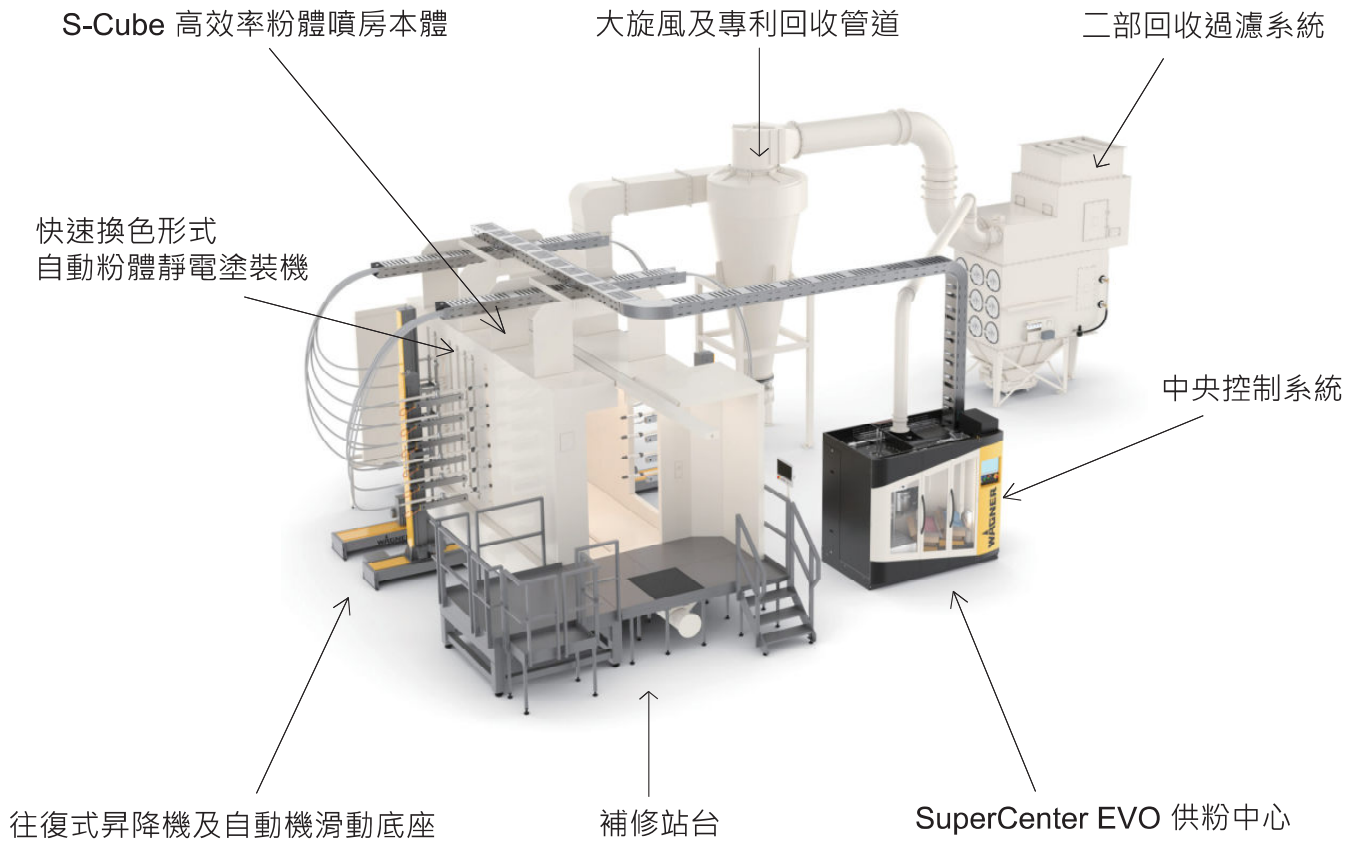


### 4. 3D自動工件判別 Industrial solution : DYNAMIC 3D COATING

在入口處設置掃描工件的3D光學系統, 高解析度掃描鏡頭使用多個鏡頭以適當的方式掃描工件通過的區域, 以避免可能的碰撞, 並以精確的方式定義輪廓, 以正確且精確的方式調整噴槍, 噴嘴的位置



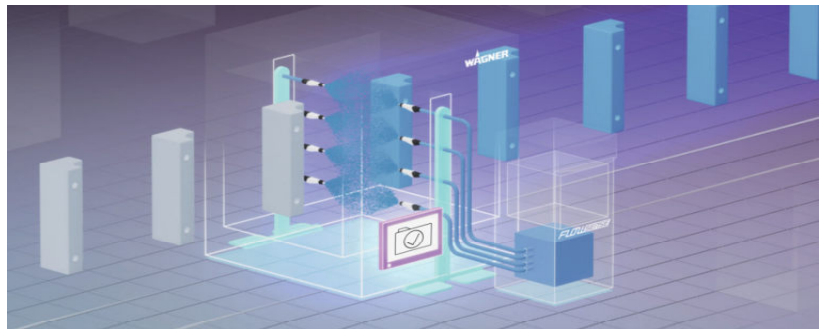
### 5. 粉體噴房 S-Line系列, Powder coating booth



### 6. 粉體自動噴槍 PEA 系列 Automatic guns

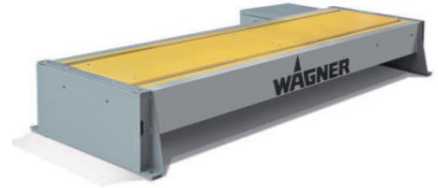


7. 工業設計部門, Engineered system





8. 自動噴塗機, Motion technology



9. 粉體塗裝供粉中心, Powder center



PXM Powder Center



PXS Powder Center



IPS



EVO SuperCenter

**10. 粉體手動噴槍系統, 振動/粉桶台車式, Manual System Sprint**



Manual Unit Sprint 2B 振動台車式  
 PEM-X1 Manual Gun 粉體手持靜電噴槍  
 Sprint 2 XE系列控制器  
 PI-F1 Injector 粉體塗料泵浦 PI-F1  
 11mm PH 特殊塗料管 ID11mm,5ML  
 Gun & Hose holder 噴槍架,管路架  
 Connecting cables, Hoses 槍控線路, 管路



Manual Unit Sprint 2H 浮動粉桶台車式  
 PEM-X1 Manual Gun 粉體手持靜電噴槍  
 EPG-Sprint X Controller X系列控制器  
 PI-F1 Injector 粉體塗料泵浦 PI-F1  
 ID 11mm PH 特殊塗料管 ID11mm  
 Gun & Hose holder 噴槍架,管路架  
 Connecting cables, Hoses 槍控線路, 管路  
 選配 - Powder container 3, 25, 60L 浮動粉桶 3, 25, 60L



Manual Unit Sprint 2CG 實驗室小批量式  
 PEM-X1 Manual Gun 粉體手持靜電噴槍  
 EPG-Sprint X Controller X系列控制器  
 PI-F1 Injector 粉體塗料泵浦 PI-F1  
 Connecting cables, Hoses 槍控線路, 管路  
 Powder cup with lid 210 ccm 塗料杯 210 ccm  
 Transport Case 手提箱

**11. ID手動粉體噴房, Manual spray booth**



12. 旋杯式靜電自動化噴塗系統, TOPFINISH RobotBell



Produkt	Angle	High Voltage	Mounted on
Topfinish Bell 1 - S*	0°	100 KV	Reciprocator, fixed arrangement and handling robot
Topfinish RobotBell 1 - A60	60°	70 KV	Hollow Wrist Robot
Topfinish RobotBell 1 - B60	60°	100 KV	Hollow Wrist Robot





### 13. 兩液型自動化噴塗系統, Electronic mixing unit for 2K/3K



Characteristics	Values
Mixing accuracy	± 1%
Mixing ratio	0.1 : 1 - 50 : 1
Material pressure	Max. 325 / 530bar <sup>1</sup>
Flow	50 - 7000 cc/min <sup>2</sup>
Components A	Max. 25
Components B	Max. 10
Components C	Max. 10
Components D	Max. 10
Flushing agent A	10
Flushing agent B	5
Flushing agent C	5
Flushing agent D	5
Guns	Max. 4
Material temperature	+ 5 °C - + 60 °C ; +41 °F - +140 °F
Material viscosity	20 - 2200 mPas, depending on the flow meter
Workable materials	Water and solvent-based materials
Workable components	2K, 3K, and 4K
Dimensions (W x H x D)	Wall mount: 950 x 1700 x 350 mm Stand: 980 x 2010 x 580 mm

### 14. 水性靜電自動化噴塗系統, Electrostatic application of waterborne paint

#### 1. 傑出的應用方案效率

The manual guns are designed for most water-based products with a specific resistance of the spray material of between 1kΩ-cm and 1MΩ-cm. The guns are fitted with a special, permanently connected product hose and offer a soft and homogenous spray jet for maximum coating quality and excellent application efficiency.

#### 2. 多樣化的塗料儲存槽

Two sizes of cabinet are available with the new generation of AquaCoat systems. The slim basic AquaCoat 5010 device is suited to areas with little available space. The wide basic AquaCoat 5020 device provides considerably more space for larger tanks, possible extensions, and increased freedom of movement in the cabinet during maintenance work.

#### 3. 可目視內部狀態, 或選擇塗料液位警報

All control and operating elements of the AquaCoat system are easy to access from outside centrally on the control unit. As an option, the cabinets are available with a window for checking the level of the separating agent / paint container.

#### 4. 最高等級的安全防護系統

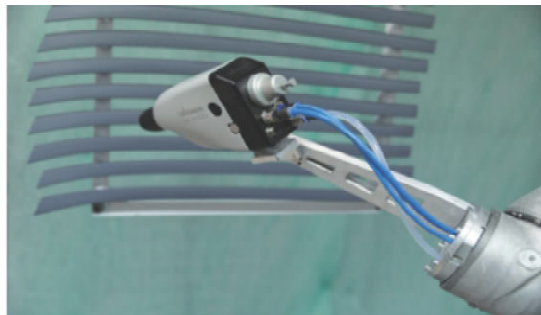
During application, access to the interior of the system is blocked mechanically. The most important safety systems are duplicated (redundant) and thus provide optimal user protection.

#### 5. 快速換色, 適合多色噴塗

The large door provides easy access to the paint supply and enables quick topping up or paint changes.



## 15. 溶劑型/水性靜電自動化噴塗系統 electrostatic application - automatic



GA 5000	GA 5000EA	GA 5000EAW	GA 5000 EAC	GA 5000EACW
Output voltage	80 KV	80 KV	80 KV	80 KV
Output Current	100 µA	125 µA	100 µA	100 µA
Max air pressure	8 bar	8 bar	8 bar	8bar
Max material pressure	8 bar	8 bar	250 bar	250 bar
Length	272 mm	272 mm	290 mm	290 mm
Width	74 mm	74 mm	74 mm	74 mm
Height	135 mm	135 mm	135 mm	135 mm
Material connection	G 3/4"		NPS 3/4"	
Atomisation air connection	D10	D10	D10	D10
Shaping air connection	*/D8	*/D8	*/D8	*/D8
Control air connection	D6	D6	D6	D6
Weight	1,2 kg	1 kg	1,2 kg	1 kg
Operating temperature	0 °C - 40 °C 32 °F - 104 °F	0 °C - 40 °C 32 °F - 104 °F	0 °C - 40 °C 32 °F - 104 °F	0 °C - 40 °C 32 °F - 104 °F
Max material temperature	50 °C 122 °F	50 °C 122 °F	50 °C 122 °F	50 °C 122 °F



## 16. 溶劑型/水性靜電手動噴塗系統 electrostatic application - manual



- High voltage I/O 高壓靜電 I/O
- Ground monitoring 接地監控
- Atex Zone 2 (Spraypack-compatible) 防爆等級
- Variable voltage and current adjustments 調整電流, 電壓
- Recipe selection/store 記憶參數組, 選擇/記憶
- Monitoring working voltage & current (LED & Numeric display) LED 顯示
- Servicetime / interval setting 使用時間/保養時間 設定
- Communication interface (in out for current and voltage, error and reset signals, grounding and ok for HV when flushing is finished) 通信界面 (無電流電壓, 復歸異常信號, 接地檢知, 沖洗時關閉 HV)



## 17. 靜電自動化噴塗系統旋杯, Bell electrostatic atomizer

### Rotary Electrostatic Automatic Atomizer Gun

F-3000-C 型 旋風式旋杯靜電塗裝機

F-3000-C 型 カップ型 靜電塗裝機



The centrifugal force of new type air cup and bell cup enable superior atomization that offers high quality finish coatings.

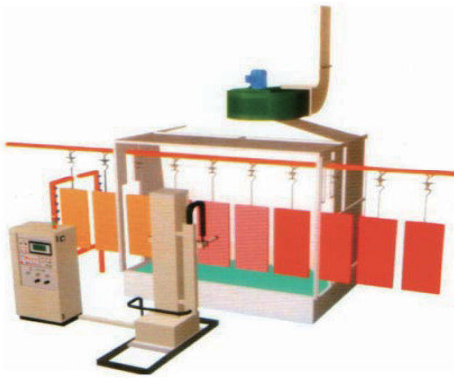
The new type bell cups offers superior transfer efficiency that reduce paint consumption and improve the environment of coating line.

空氣霧化旋杯和噴塗旋杯使提供進階優勢的霧化效果, 完美新型的離心力霧化, 達到最高階品質的塗裝表面。新型旋杯提供超高的附著效率, 降低塗料消耗, 並且能兼顧環境保護議題, 達到降低能源, 資源消耗目標。

Specification 仕様		
Model	型式	F-3000-C
Turbine speed	回転数	1500-2000rpm
Shipping A. consumption	消費量	80-250ml/min
Rotary A. consumption	消費量	50-200ml/min
Paint fluid	吐出量	400cc/min Max
Dimension	寸法	650 X φ100mm
Weight	重量	4 kg

### Bell Atomizer Electrostatic Automatic Coating System

旋杯式靜電自動噴塗系統



- High speed bell produce optimum atomization
- High transfer efficiency
- Lower spray booth maintenance cost
- Lower spray booth air velocity
- High paint saving gives rapid return on capital investment
- Less pre and past spray needed due to wrap around affection
- Twister type for coating angular and sharp-edge work pieces
- 高轉速將塗料微粒化
- 塗裝附著效率高
- 減低噴房維護成本負擔
- 減低噴房排氣風速
- 減低噴塗中的塗料浪費, 快速回收投資成本
- 減少提前開槍與延遲關槍, 靜電包覆效果佳
- 旋風式旋杯可克服複雜型工件, 將大部份角落噴入

## 18. 靜電自動化噴塗系統旋杯, Disk electrostatic atomizer

### The Pneumatic High Speed Disk Atomizer

氣動式圓盤型高速霧化系統

The DISK system is suitable for high volume production coating application with geometrical dimensions allowing guidance an almost circular path around the DISK coating system.

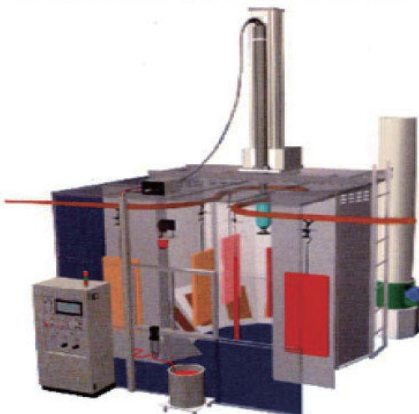
DISK 靜電塗裝系統適用於大批量的生產條件, 尤其針對立體多邊型狀的被塗物, 被塗物環狀包圍在 DISK 噴房周圍, 讓噴塗系統進行噴塗作業可大量節省塗料。

Specification 仕様		
Model	型式	D001-100
Disk diameter	霧化盤尺寸	100mm/170mm/230mm
Turbine speed	旋轉速	5000-30000rpm
Operating voltage	使用電壓	30-90KV
A. consumption	空氣消耗	500-1200l/min
Paint fluid	吐出量	1120cc/min Max
Atomizer dimension	霧化器尺寸	L750 X φ200mm
RCP speed	昇降機速度	5-36M/min
RCP stroke	昇降機行程	1200mm(standard)



### Disk Atomizer Electrostatic Automatic Coating System

圓盤式靜電自動噴塗系統



- High speed turbine coater creates optimum paint atomization of even higher solid coatings
- Directional air flow and electrostatic produce high quality coverage and minimize paint waste
- The total enclosure of the disk sprayer simplifies cleaning of atomizer and ensures a consistently high quality of coating result.
- The compact design of disk system permits removal of all enclosure elements for optimum access and convenient maintenance
- 高速旋轉使塗料微粒化進而達到高品質霧化塗裝效果
- 塗料經圓盤高品質霧化後再加上靜電效果, 使塗料包覆被塗物, 可節省塗
- 所有機件完全包覆在殼內使清潔容易, 清潔及霧化風壓順暢更符合高品質的噴塗作業
- 機件組合式設計, 拆解容易, 保養簡單



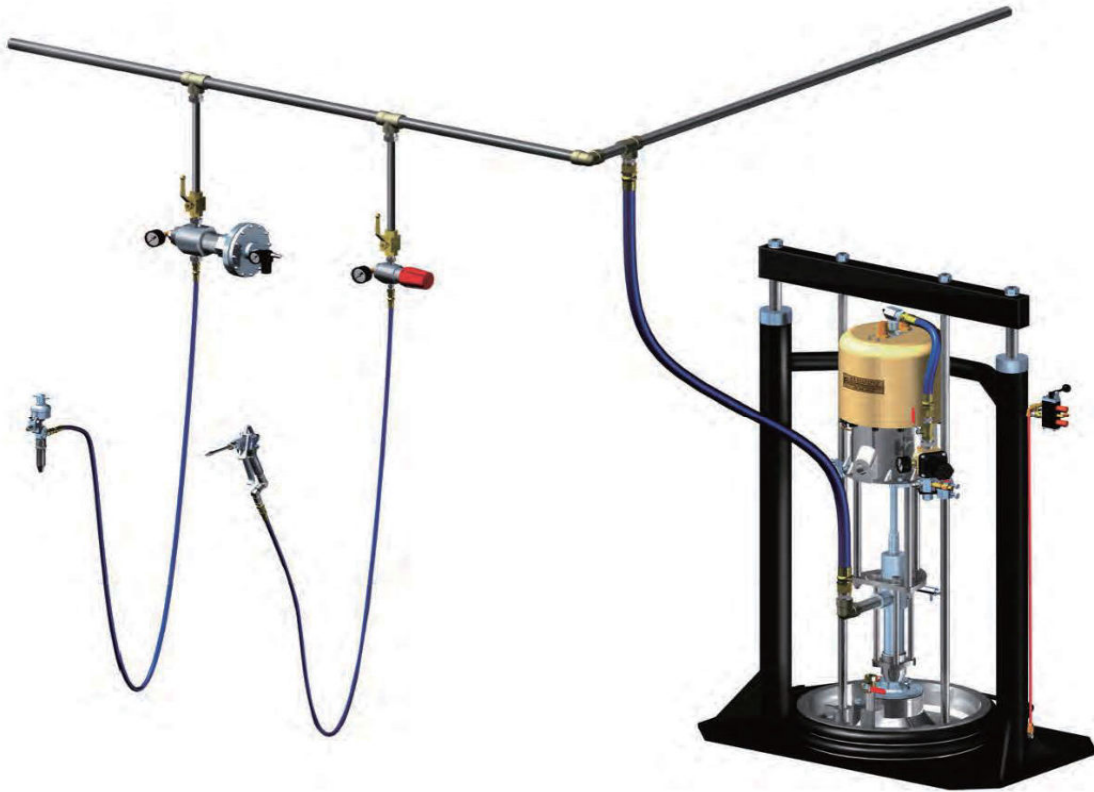
19. 粉, 液體塗裝用機器人, ABB robot



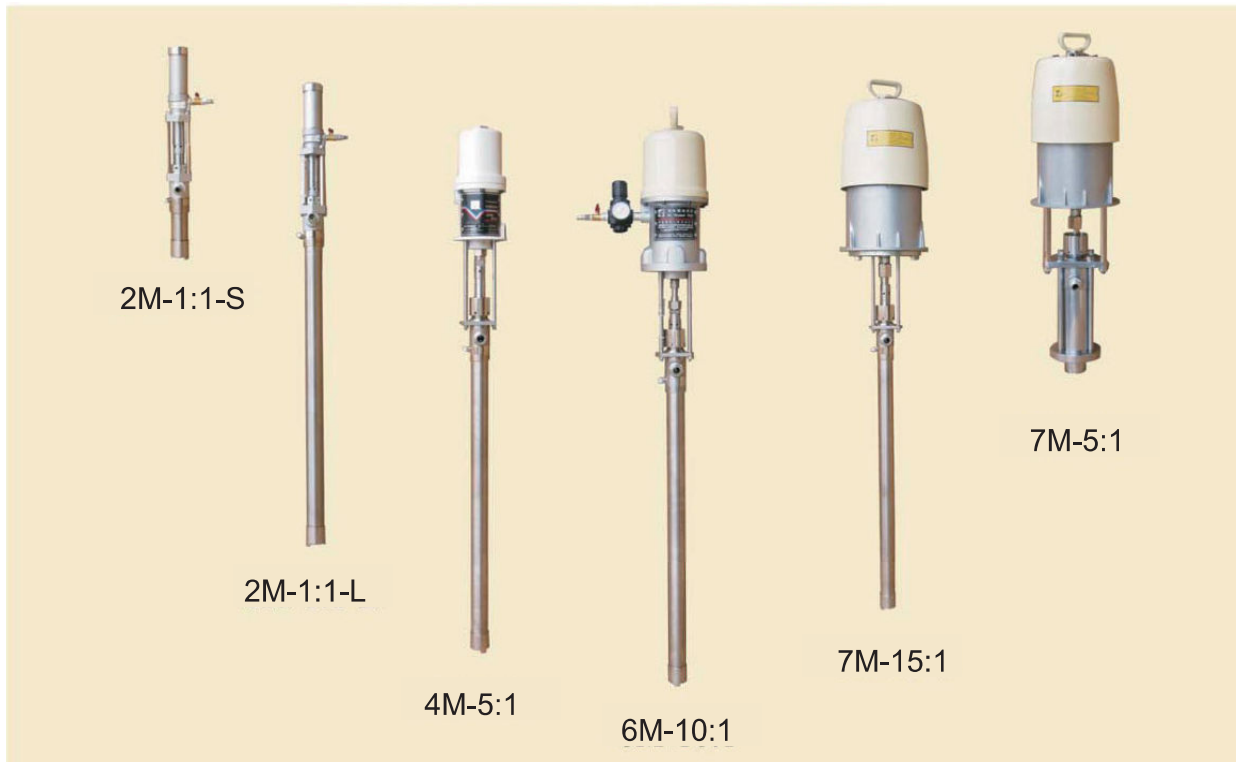
20. PCS塗料供應循環泵浦系列, 工程設計, 規劃, Paint circulating system



**21. 高黏度塗膠機, 泵浦系列, 工程設計, 規劃, Sealing equipment**



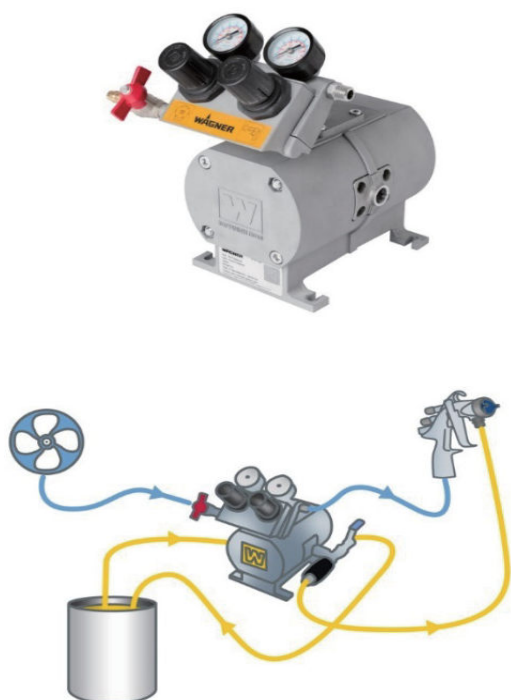
**22. 塗料輸送泵浦, 泵浦系列, 工程設計, 規劃, High viscosity material transfer**



23. 高/中/低壓氣動泵浦, Air operated pumps



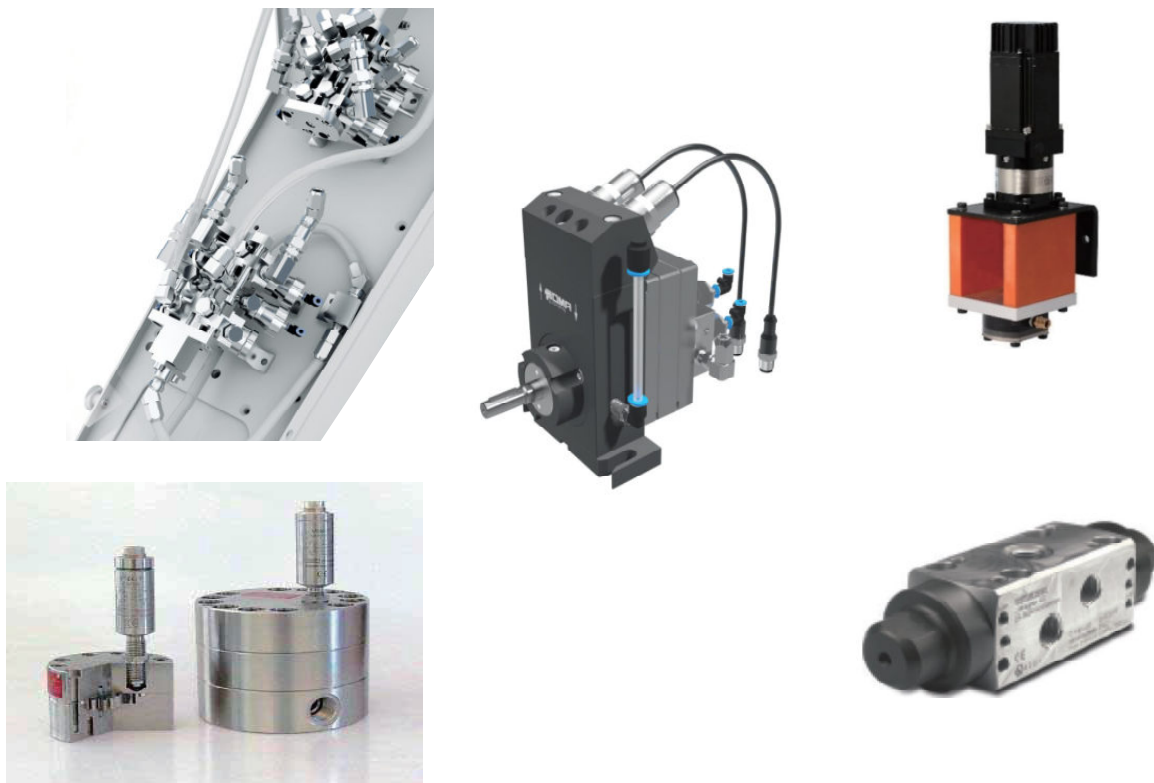
24. 塗料供應, 水性/溶劑型塗裝, Pulse-free double-diaphragm pump



Technical data	
Pressure ratio	1:1
Air inlet pressure	1-8 bar
Volumetric flow with free outlet	10 l
Volumetric flow per double stroke	40 cc
Material inlet	G 1/2"
Material outlet	G 3/8"
Air outlet	G 1/4"
Material temperature	4 – 60 °C
Material pH value	3.5 - 9
Wetted parts	Stainless steel
Dimensions	192 x 142 x 175 (WxDxH without regulator)
Weight	3.1 kg without regulator



25. 流量檢知, 齒輪泵浦, 換色閥組, Flow meter, Gear pump, Dosing technology



26. 靜電高壓測試計, 塗料導電測試計, 黏度計, HV tester, Resistance meter

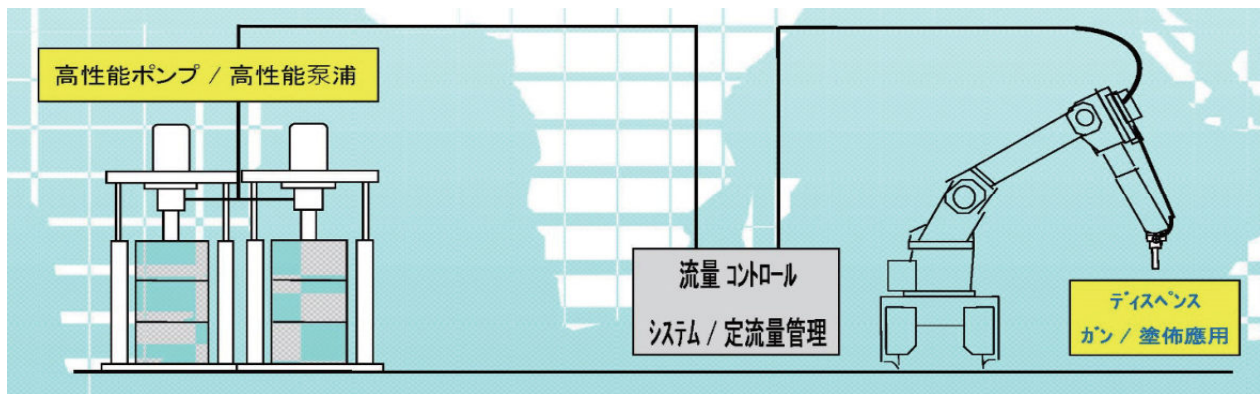
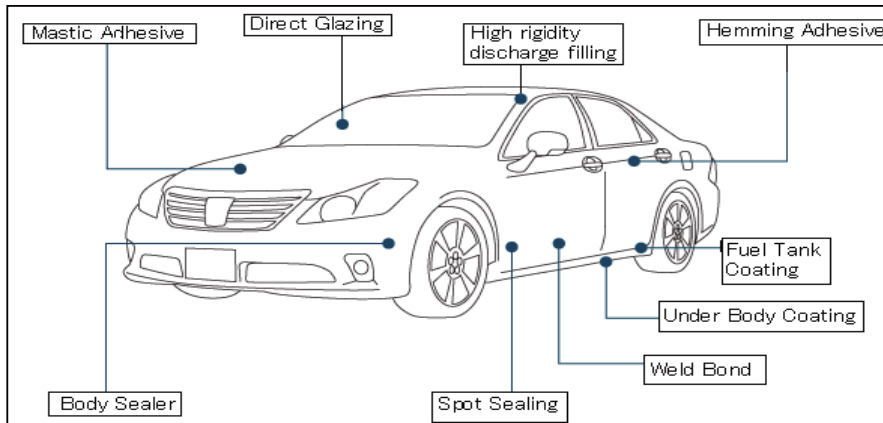


## 27. 無氣式噴塗系列, Airless



Size	Spray angle								Material filter (in mesh)	Bore inch (mm)	Material flow* l/min (gal/min)
	10°	20°	30°	40°	50°	60°	70°	80°			
07**				407	507				0.007 (0.18)	0.21 (0.055)	
09**		209	309	409	509	609			0.009 (0.23)	0.23 (0.061)	
11	111	211	311	411	511	611			0.011 (0.28)	0.34 (0.090)	
13	113	213	313	413	513	613		813	0.013 (0.33)	0.50 (0.132)	
15	115	215	315	415	515	615	715	815	0.015 (0.38)	0.68 (0.180)	
17		217	317	417	517	617	717		0.017 (0.43)	0.88 (0.232)	
19		219	319	419	519	619	719	819	0.019 (0.48)	1.09 (0.288)	
21		221		421	521	621		821	0.021 (0.53)	1.31 (0.346)	
23		223		423	523	623	723	823	0.023 (0.58)	1.63 (0.431)	
25		225		425	525	625		825	0.025 (0.64)	1.92 (0.507)	
27		227		427	527	627		827	0.027 (0.69)	2.25 (0.594)	
29						629			0.029 (0.75)	2.58 (0.682)	
31		231		431	531	631			0.031 (0.79)	2.95 (0.779)	
35		235		435	535	635			0.035 (0.90)	3.80 (1.004)	
39								839	0.039 (0.99)	4.32 (1.141)	
43		243			543				0.043 (1.10)	5.00 (1.321)	
52					552				0.052 (1.30)	6.14 (1.622)	

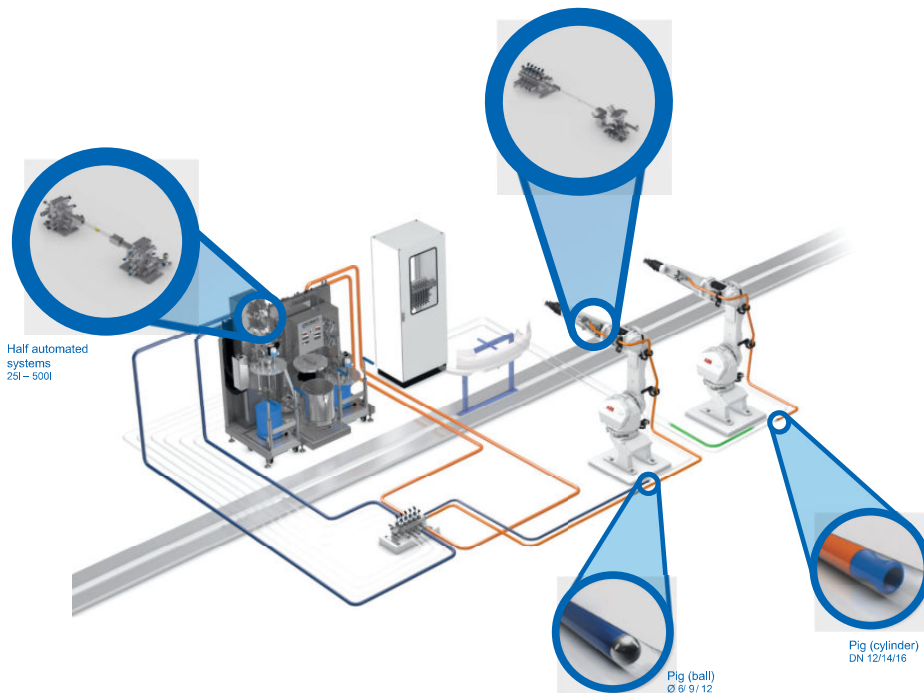
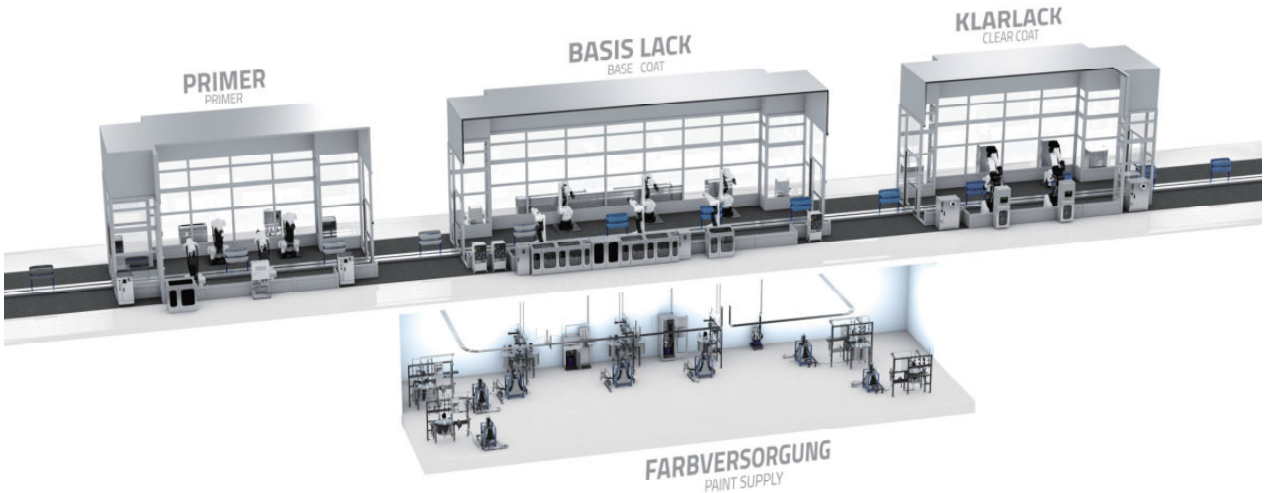
## 28. 汽車工業塗膠工程設計, Automatic sealing system



29. POMA 汽車工業一級配套廠專用自動噴塗, Automobile, Tier one

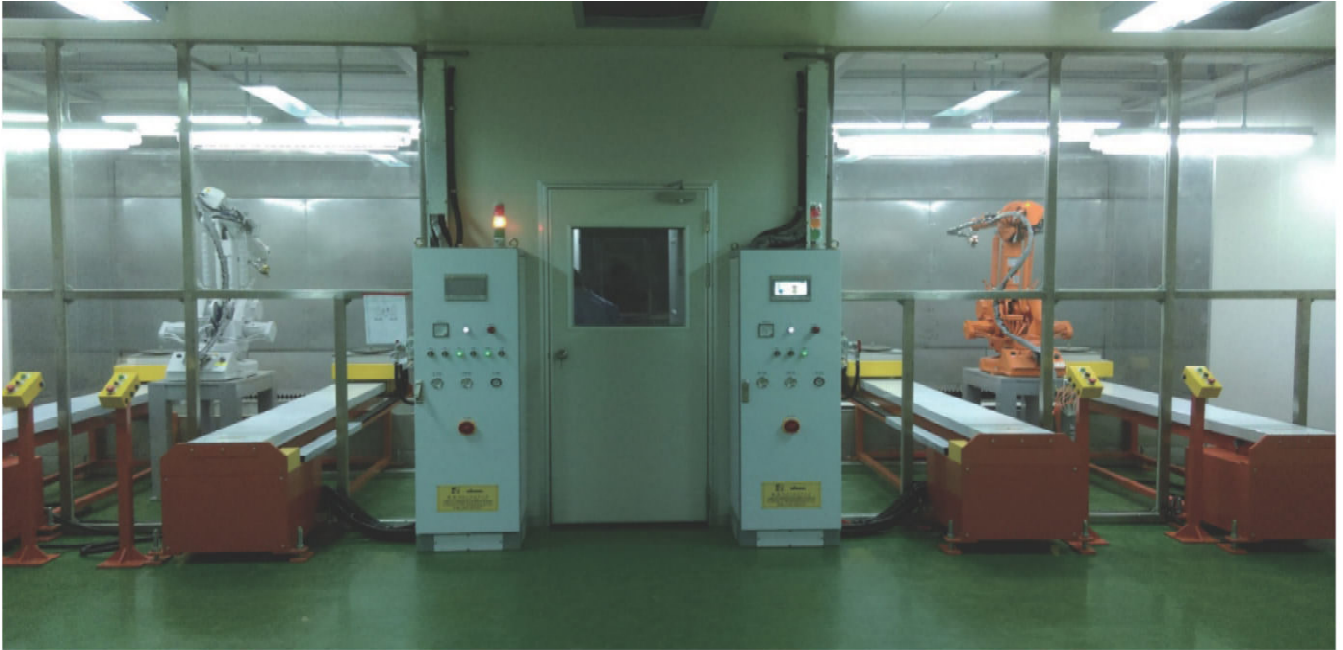


- Paint supply system 塗料供應循環系統
- Pig technology 快速換色膠囊
- Media dosing system 定量噴塗
- Potential separation system 攪拌設備
- Gear pump units 齒輪泵浦
- Material pressure regulators 塗料調壓
- Media changer 快速換色
- Media valves 換色閥組
- Spray guns 噴槍系統
- Screw connectors 塗料接頭
- Pigging technology 走珠系統

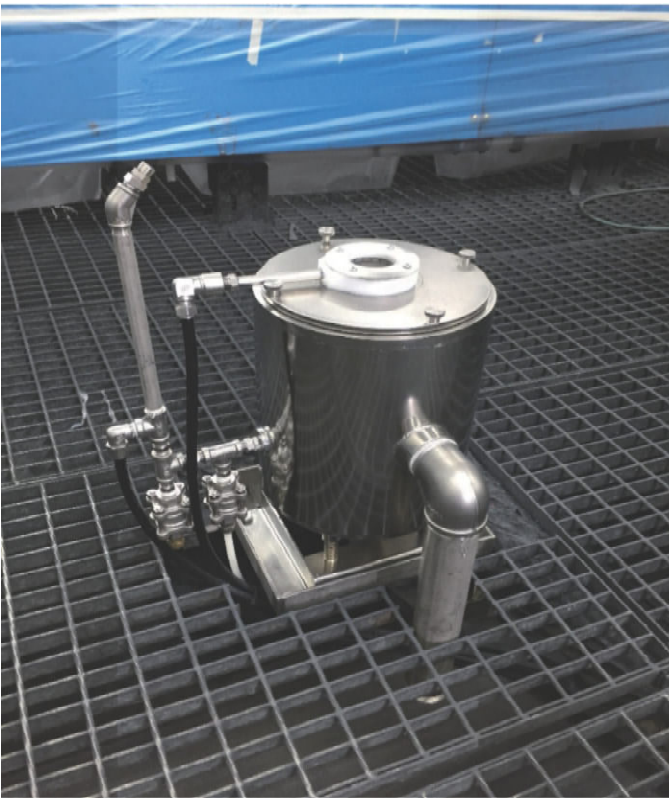




30. 液體噴房, 手動/自動噴塗, Spray booth



31. 自動化噴塗系統, 噴槍清洗, 溶劑回收設備, Robotic paint gun cleaning



32. 環保, 節能, 水性/溶劑型, 塗裝專用噴房, New paint separatin system

PG 框型-L



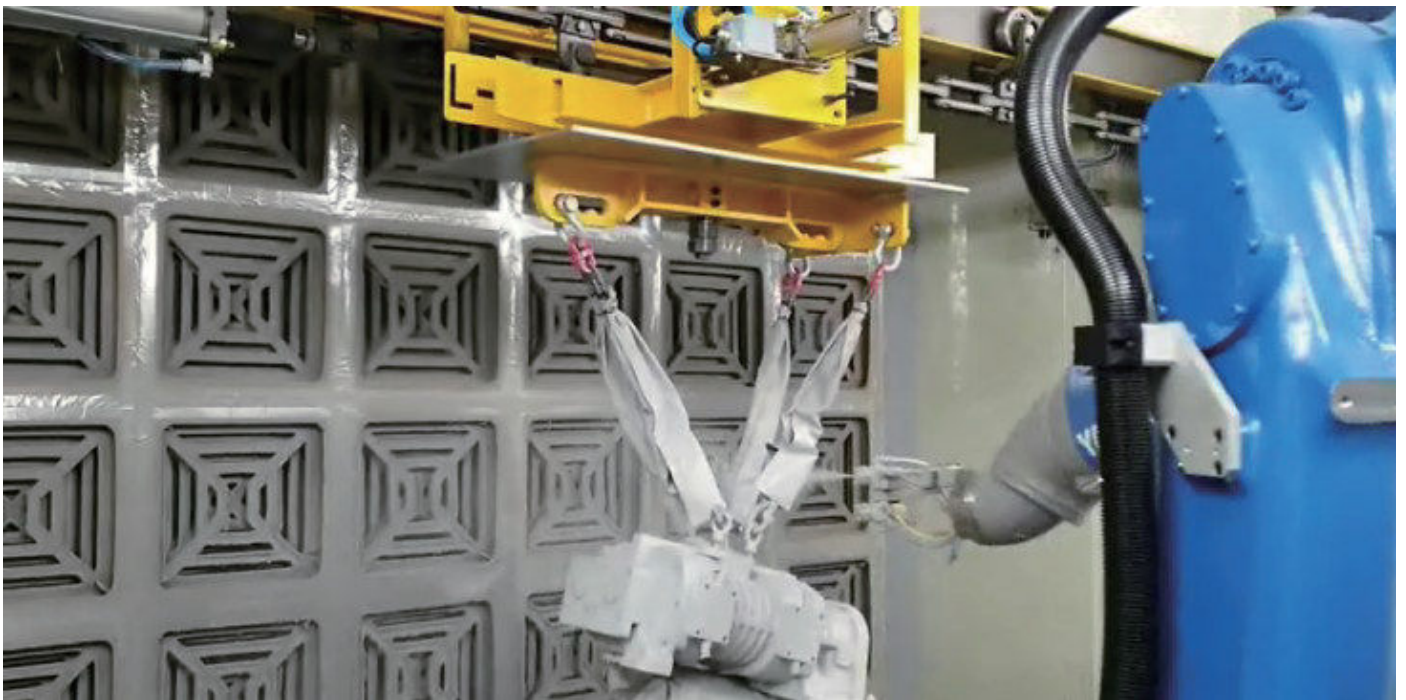
PG 框型-M



PB 箱型-UV



PB 箱型-紅



L + M + PB

L = 100mm x 100mm x 100mm (W x H x D)

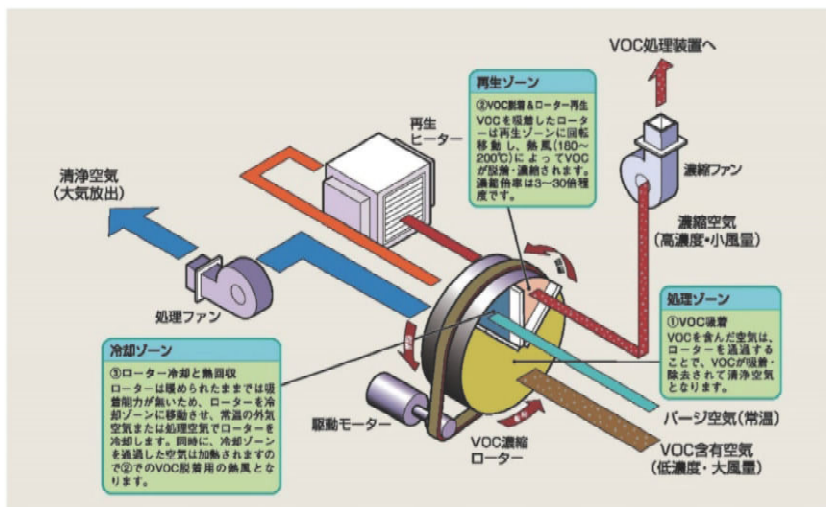
M = 100mm x 100mm x 100mm (W x H x D)

PB = 490mm x 490mm x 500mm (W x H x D)





33. VOC防治設備, 沸石轉輪, RTO蓄熱式脫臭爐, 濃縮式排ガス處理裝置, 蓄熱式排ガス處理裝置



34. VOC防治設備, 吸附式活性炭塔, Charcoal filter absorber



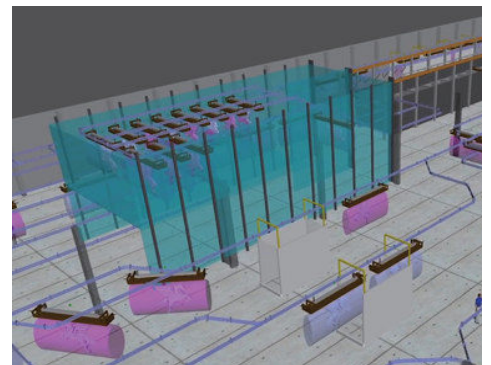


### 35. 積放鏈式, 輸送機, 天車, Power & free twin rail conveyor

雙軌輸送機適用在任何類型的工作進行任何類型製造的懸吊高架運輸，甚至也可以設計為地面運輸。

產品的巨大靈活性保證了任何自動運動的分辨率，產品可以單位或批量移動，靜態和動態累積，即使在不同速度下工作迴路之間也能完美銜接。

根據重量、要移動的工件產品性質以及輸送機所處的特定工作條件（例如腐蝕劑、高濕度和高溫）製作特定型號。



36. 即時線上同步膜厚度量測裝置, 非接觸式, CoatMaster, Coating thickness

CoatMaster Inline 線上型式



Measurement range: 1-1000  $\mu\text{m}$  膜厚

Standard deviation: <5% 誤差

Measurement duration: 0.1 – 1 s 檢知時間

Object speed: 10 m/min 輸送機速度

Measurement intervall  $\geq$  1 s 量測間隔

Power consumption: <2000 W 電力

Fuse: 10A 保險絲

Dimensions optics: 21 x 16 x 23 cm 外型

Weight optics: 5.2 kg 重量

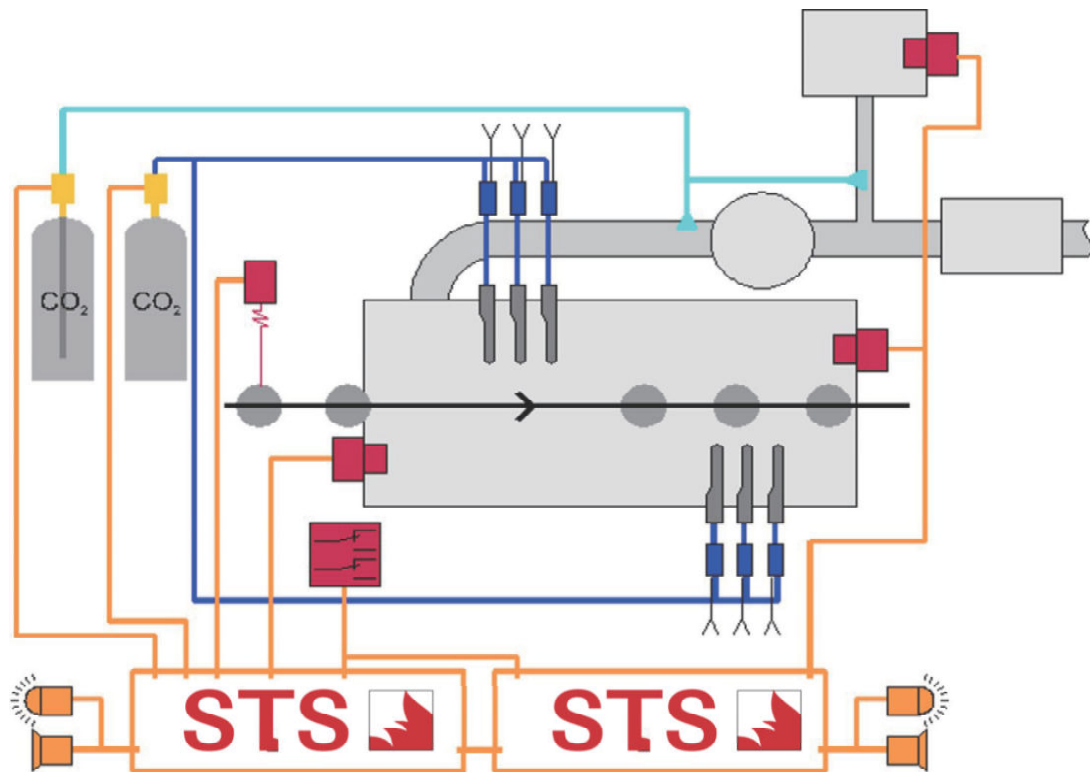
Mounting: profiles 按裝

CoatMaster Flex 非接觸式膜厚度量測計 手持型

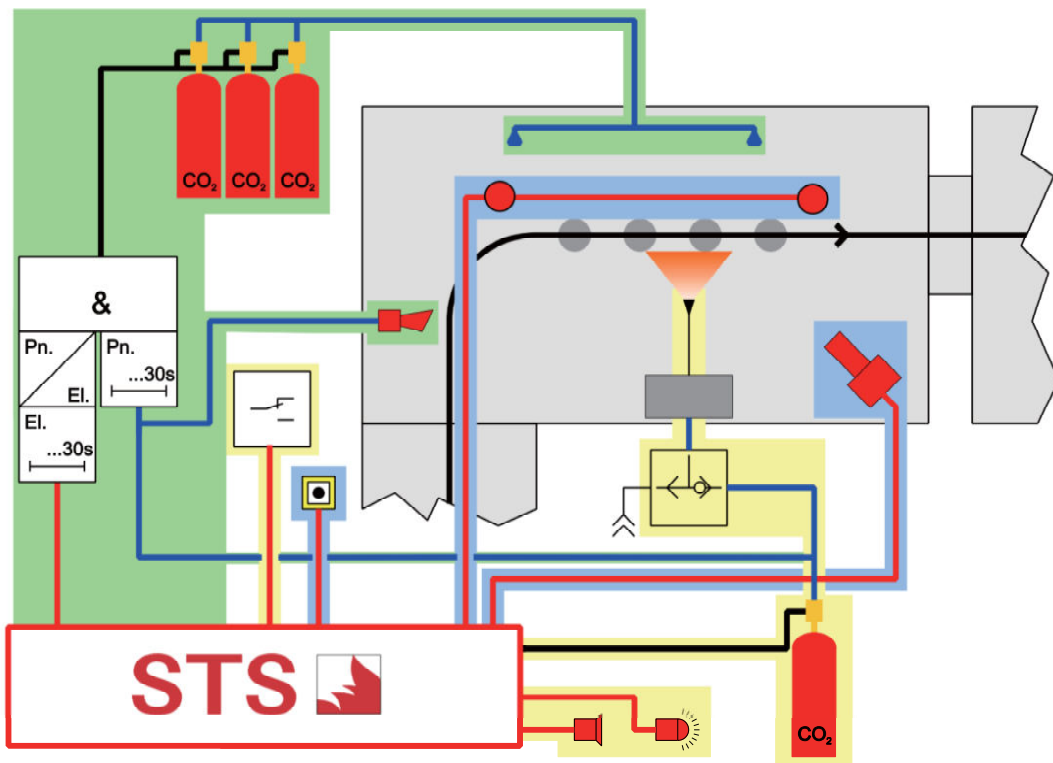


Powder coatings before curing 未烘烤前的粉末塗層 · 量測範圍	1 – 400 $\mu\text{m}$	Measurement on moving parts 量測移動中的工件	yes
Cured powder 已烘烤後的粉末塗層 · 量測範圍	1 – 1000 $\mu\text{m}$	Relative standard deviation 量測膜厚誤差	< 1 %
Wet paints before drying 未烘烤前的油漆塗層(濕膜) · 量測範圍	1 – 400 $\mu\text{m}$	Measures coatings of any color (incl. white) 量測各種顏色	yes
Dried paints 已烘烤後的油漆塗層(乾膜) · 量測範圍	1 – 1000 $\mu\text{m}$	Real-time data access via ERP and browser 透過ERP及瀏覽器獲得即時數據	yes
Measuring time 量測時間	from 20 ms	Weight (without battery) 重量(不含電池)	1.3 kg
Distance tolerance 量測距離	2 – 15 cm	Dimensions 尺寸	374 x 91 x 203 mm
Tilt tolerance 量測傾斜角度範圍	$\pm 70^\circ$		

37. 專業粉體塗裝消防系統+自動接地檢測設備 Fire fighting - powder



38. 專業液體塗裝消防系統+自動接地檢測設備 Fire fighting - wet





### 39. 吊具,工件剝漆設備 Jig stripper



軟性剝漆, 對吊具或工件沒有磨損和變形的影響  
 常溫剝漆, 沒有高溫退火傷害吊具或工件的影響  
 物理衝擊力, 沒有需要再剝離, 或再敲打剝漆  
 處理速度快, 不需要批次等 4/8/16/20 min  
 運行成本低可以在短時間內攤提 1gk = 1hr  
 整個剝漆過程可以在控制盤設定完成 – PLC  
 任何人都能很容易地操縱設備  
 沒有危險性, 任何位置都可以設計安裝  
 不使用藥劑  
 不使用瓦斯  
 沒有廢氣排出  
 沒有廢水排出  
 沒有高溫廢熱排出

■主要規格 Specification

形式 Model	項目 Item	有效工作尺寸 Effective size (φ×Hmm)	吊下荷重 Lift load (kg)	投射裝置 Rotar unit		集塵裝置風量 Dust collector cap. (m <sup>3</sup> /min) 2.0KPa	電氣容量 Electricity (kW)	本体寸法 Machine size (W×L×H mm)
				形式・台數 Model/No.of unit	最大投射量 Max. projection cap.			
FJS-510		500×1000	75	FR37type×1	60kg/min×1	12	4.95	2100×1200×2500
FJS-700SL		700×1400	75	FR37type×2	60kg/min×2	12	8.85	2400×1300×3000
FJS-1000		1000×1500	75	FR37type×3	60kg/min×3	28	15.5	3000×1700×3500
FJS-1200		1200×1800	75	FR37type×3	60kg/min×3	28	16.6	3200×1900×3800
FJS-1000H		1000×2000	75	FR37type×3	60kg/min×3	28	15.4	2920×1600×4000
FJS-1025		1000×2500	75	FR37type×4	60kg/min×4	28	20.15	3000×1600×4500

合作廠商



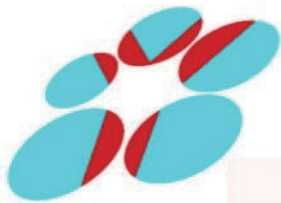
Efficiency for your success.  
German technology.



サノヤス・エンジニアリング株式会社  
Sanoyas Engineering Corporation



**AIR GASES TECHNOS**



横浜技研株式会社

**STS**



**BRANDSCHUTZ SYSTEME**

*Cool down.  
Fire Protection by*

**MINIMAX**



SURFACE TECHNOLOGY GROUP



ホソカワミクロン

**NeuFilter**®

DIE FILTERPIONIERE

# 高品質自動化塗裝科技

## High Technology Coating System



春泰機械工程有限公司 鴻達自動化設備有限公司  
台灣 桃園市 龜山區 忠義路2段260巷65號  
工四工業區

Fuspec Taiwan Pty., Ltd.

No. 65, Lane 260, Sec. 2, Jhong Yi Rd.

Guei Shan District, Taoyuan City 333 Taiwan

Tel: +886 3 3185977

Fax: +886 3 3185978

E-mail: [fpec@ms22.hinet.net](mailto:fpec@ms22.hinet.net)

Web: [www.fuspec.com.tw](http://www.fuspec.com.tw)